

Setting up your Computer for Use with Flip Camera

Installing the FlipShare software is **optional**. You may use it to view your videos and do basic editing. Alternatively, you can copy the video files directly off the FlipCam, convert them (see Converting Video Files) and edit in MovieMaker *without* installing the FlipShare software. Open my computer > Flipcamera > DCIM > Copy and paste videos into appropriate new folder.

If you choose to install the FlipShare software:

Faculty Machine – same as below.

*Student Machine – You **MUST** be logged in with an adult/faculty account. Then click Start > My Computer > Instructional Share (S:) > Software > Flip Camera > Setup_Flipshare.exe and follow the prompts to install.*

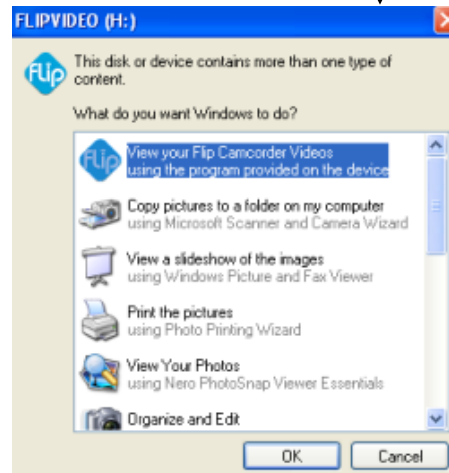
Accessing the Videos on the Camera

To see the videos on the camera and use them in MovieMaker do the following: Plug the camera into a USB port. You may see a pop up box like the one below. If so, choose **View Flip Videos** and click **OK**.

At this point the flip share software should start up and load thumbnails of each of the video clips stored on the camera.

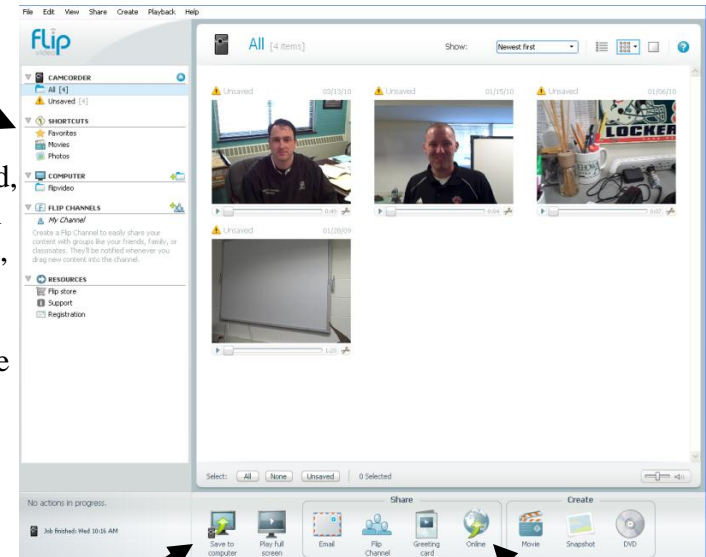


Notice in the segment above, the date the video was recorded appears in the upper right hand corner. Below the video is the Play button. The total length of that video clip shows at the end of the slider. If you click the scissor icon it allows you to trim off the beginning and/or end of the video by sliding in the tabs below the timeline in the trim pop-up. You can also right-click on a video segment to play it full screen.



Using the Flip Share Software

This pane contains all locations your videos can be stored, including on the FlipCam, on your computer and/or on the Internet (Flip Channels).



Save to computer – This button transfers the currently selected video to your computer's hard drive. This option is not recommended for student projects.

Online – this allows you to upload video to popular social networking sites such as Facebook and YouTube.

Recommended way to save video from FlipShare to computer for editing – Right-click on video thumbnail in FlipShare and choose **Export...** You will get a warning message; just click **Export** again. It will then ask where you would like to save it. Select a folder in your F drive (you may want to create a video folder). It may take several minutes for this to complete.

Delete video from camera – Make sure you have the camcorder selected on the left hand side. Left-click once to highlight a video and click **delete** on your keyboard. Select **permanently delete**.



Converting the Exported Files

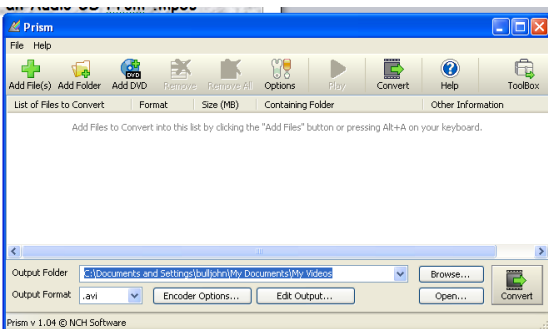
Depending on the year/model of the flip camera the exported/saved video files may not be in a format that can be edited using MovieMaker (though you can still use the basic video editing software included with the camera). MovieMaker will accept videos in **.wmv** format, but not **.mp4** format..

Located in the Instructional Share drive (**S:\Software\Utilities\prismsetup.exe**) is a program called **Prism** that allows you to convert an **.mp4** file into a **.wmv** format compatible with MovieMaker.

Once installed, open Prism and click **Add File**. Choose the **.mp4** file(s) you previously exported. Check the output path and make sure it is going to your **F:** drive video folder. In the output format box choose **.avi** or **.wmv**, then click **Convert File(s)**.

Note: Prism may need to download add-ins to accomplish the conversion. Select **yes** when prompted.

When Prism finishes, you will have **.avi** or **.wmv** files that you can bring into MovieMaker and edit.



Your Flip



Power On/Off

Recording Indicator Light
– this light comes on while the camera is recording.



USB Connector – Slide the bottom quarter of this down to have the USB connector pop out. Depending on your computer, you may still need an extension cable (available in Acadia Library) to connect the camera.

TV Out – Using the optional cable (available in Acadia Library) that comes with the camera you can connect this camera to a VCR, TV or projector and play back the video clips using the camera controls on the TV..

LCD Screen – Watch your movie playback and/or record in this screen. There is no viewfinder on these cameras. The amount of recording time remaining shows in the bottom of this screen.

Playback – This button will play the video that is currently selected on the LCD screen. If the TV cable is connected it will play on both screens.

+/- These allow you to zoom in and out while recording video.



Delete – This button deletes the video that is currently selected on the LCD screen.

Arrow keys – These buttons let you select a video to play or delete from the camera storage memory. Please delete videos after you transfer them to your **F** drive as the camera has a limited amount of storage.

Record – This button will start and stop the recording of a video. Remember to leave a second or two before and after your clip to aid in editing.