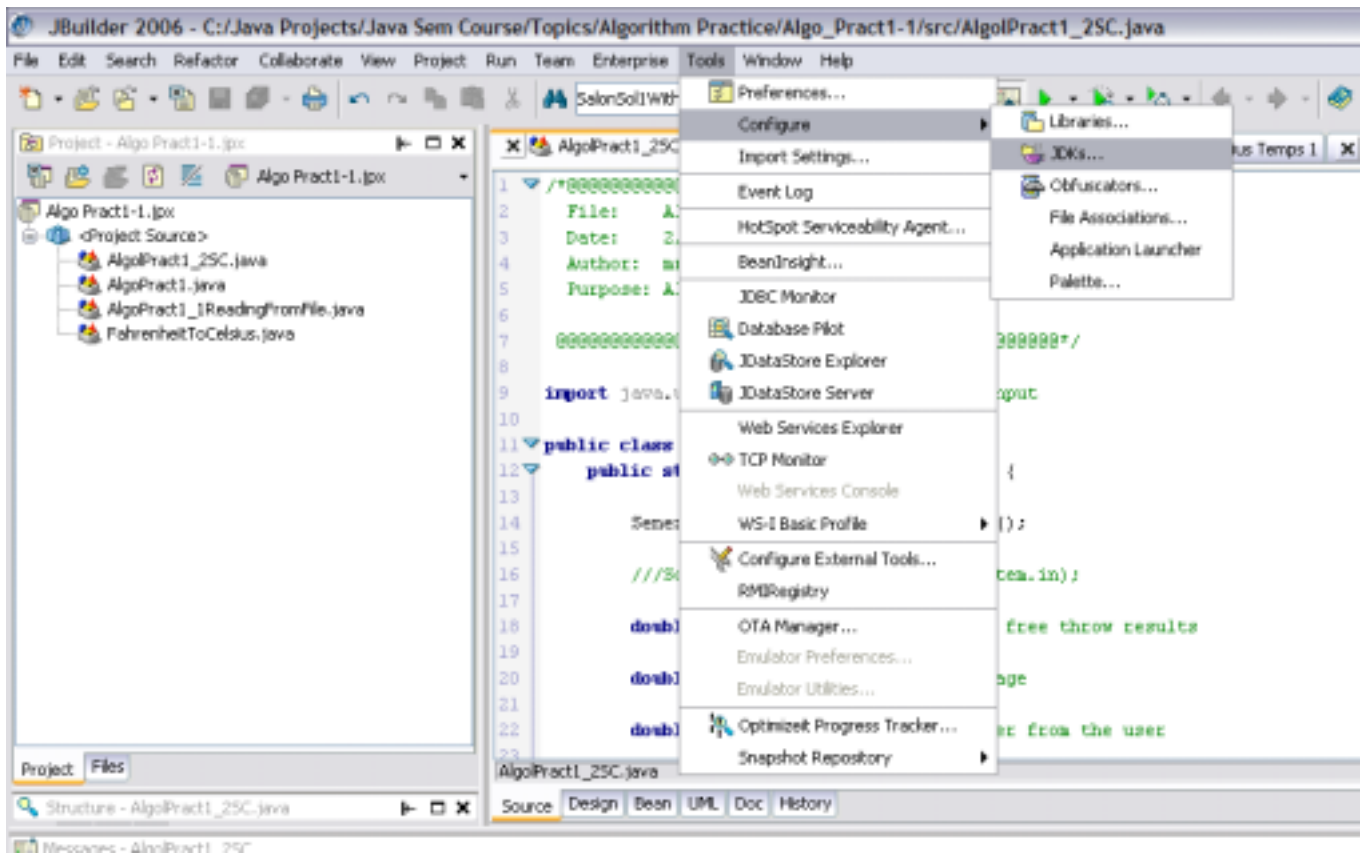
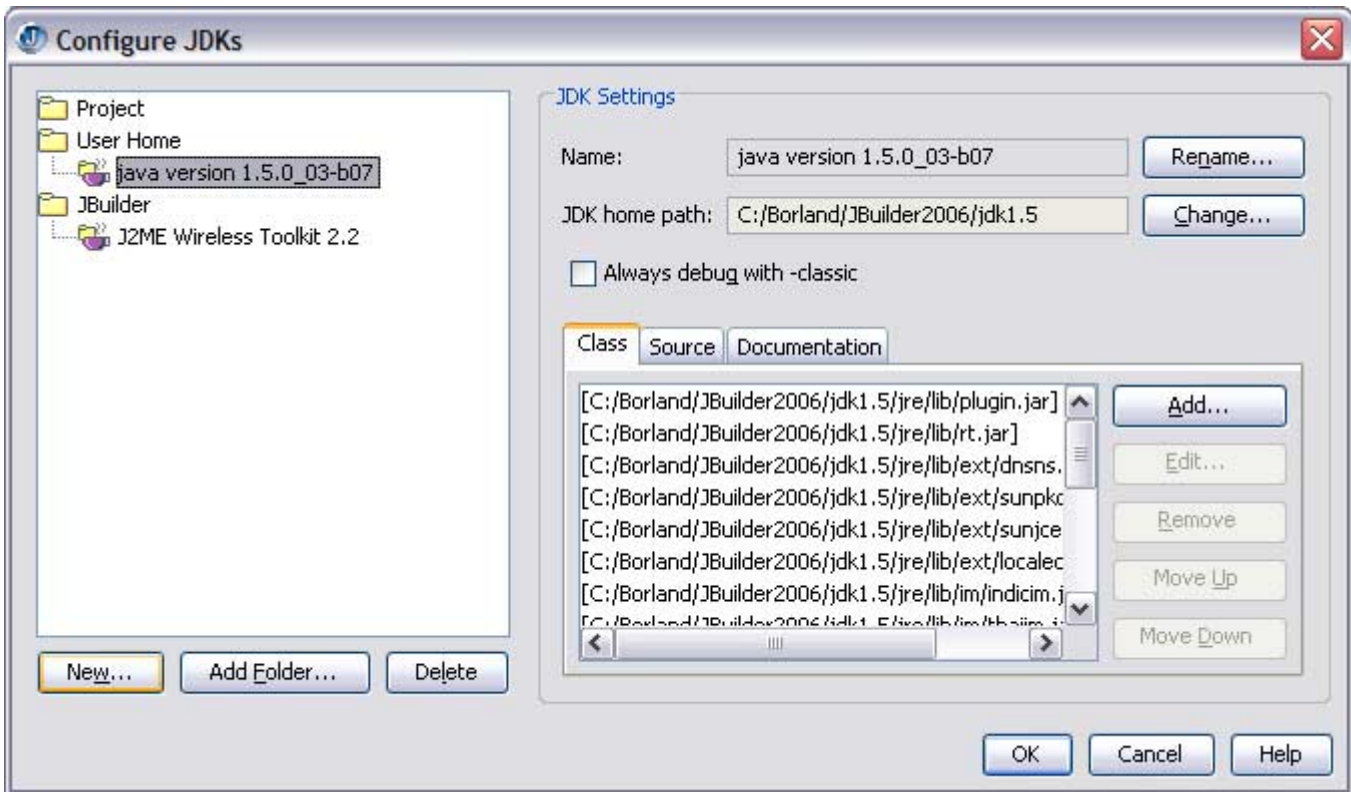


How to set up the 1.5 JDK on JBuilder in order to utilize Scanner, generics, for each loop and enum type

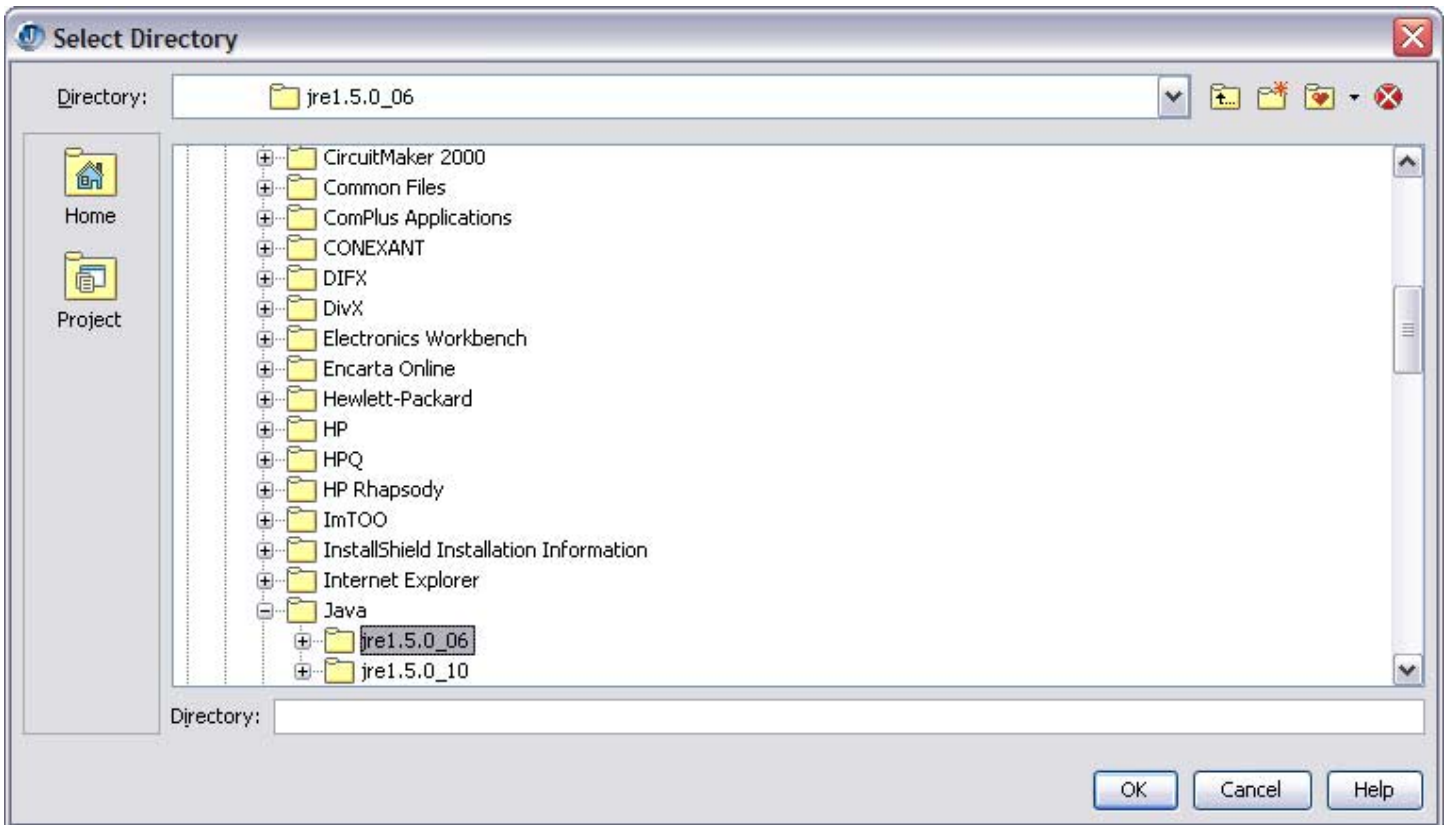
1. Choose Configure JDKs...



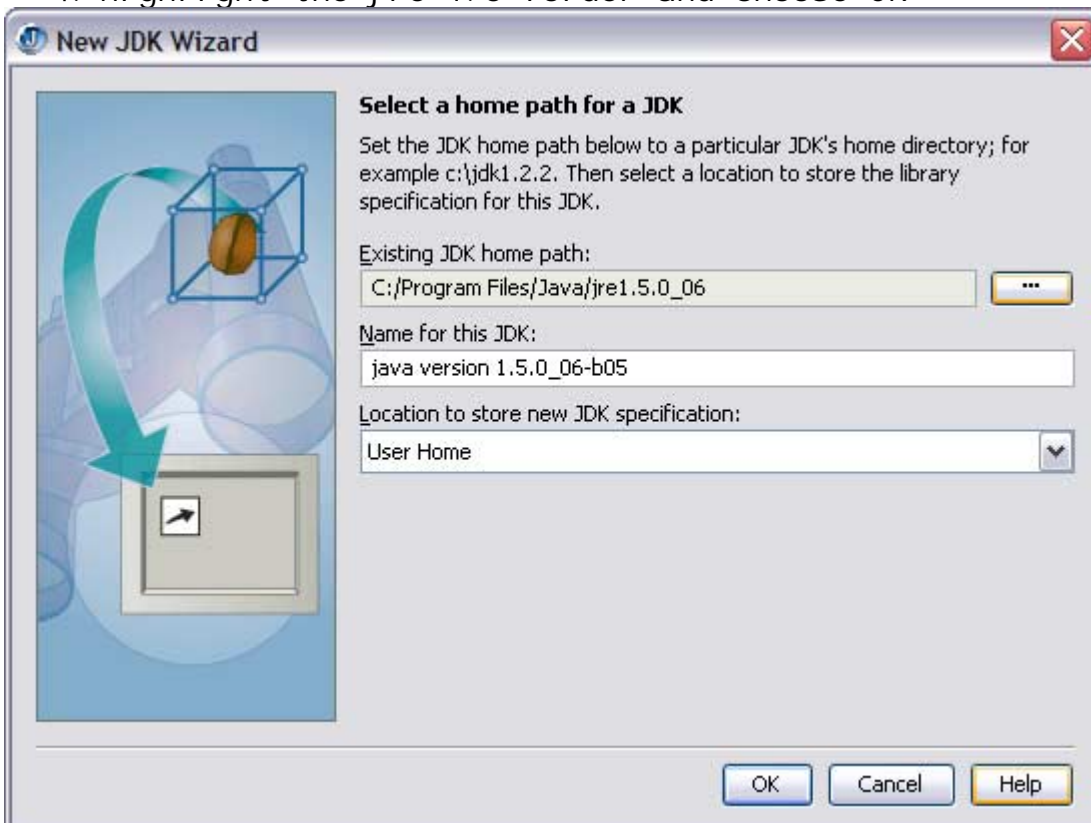
2. Choose New on the Left Side of the Screen



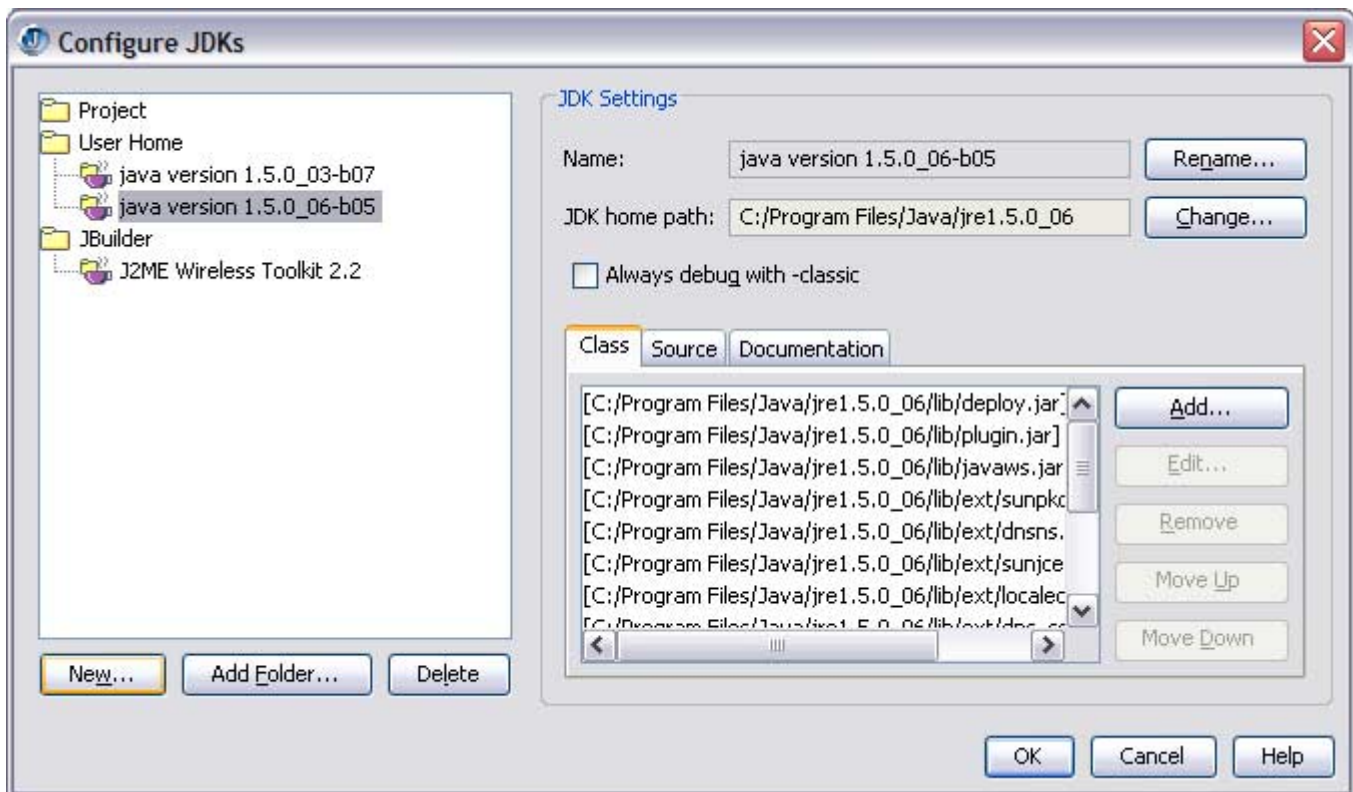
3. Navigate to the c:\Program Files\Java directory



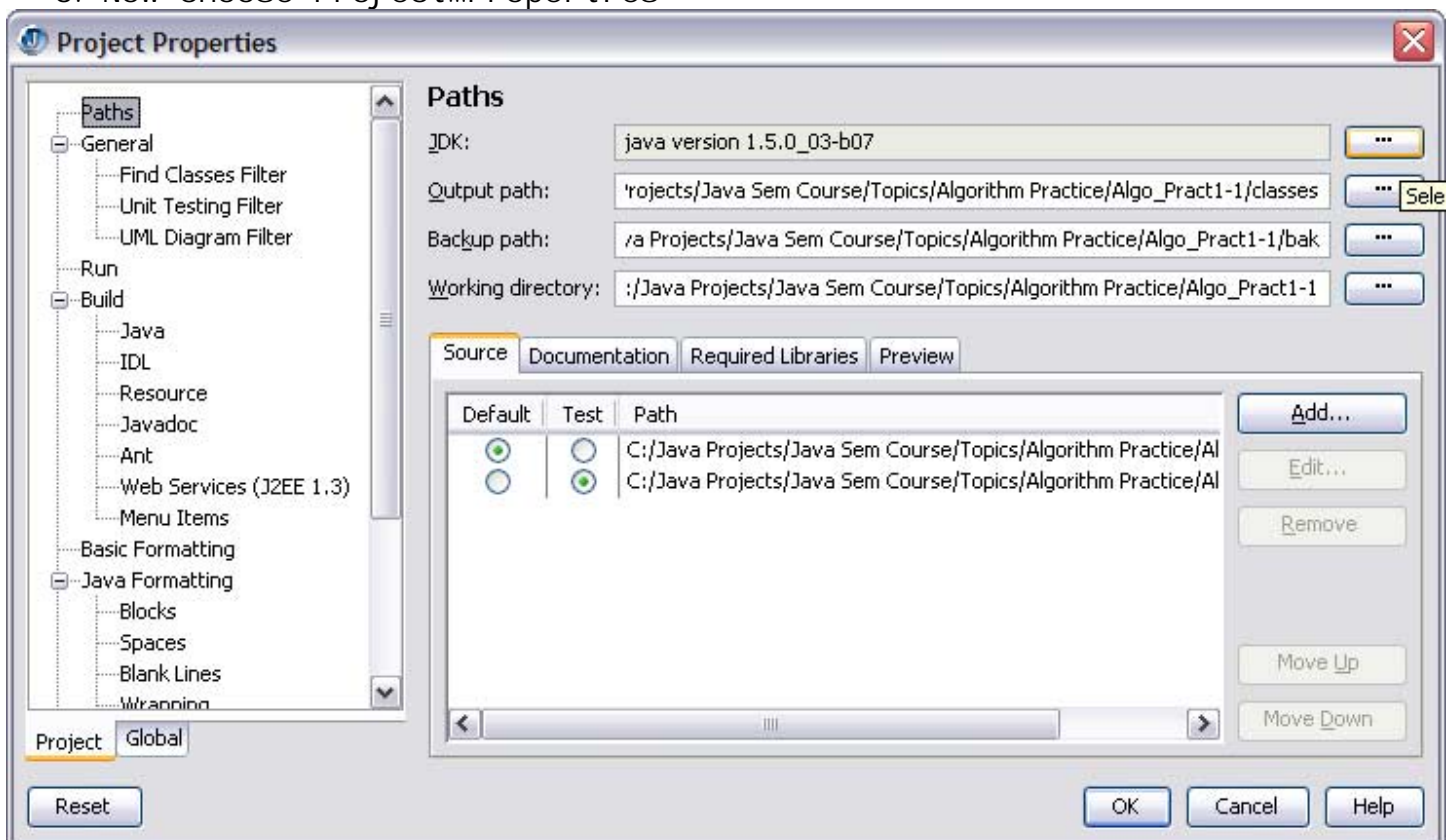
4. Highlight the jre 1.5 folder and choose OK



5. Choose OK again



6. Now choose Project...Properties



7. Under the Paths Tree List Option, Make sure JDK 1.5 is selected